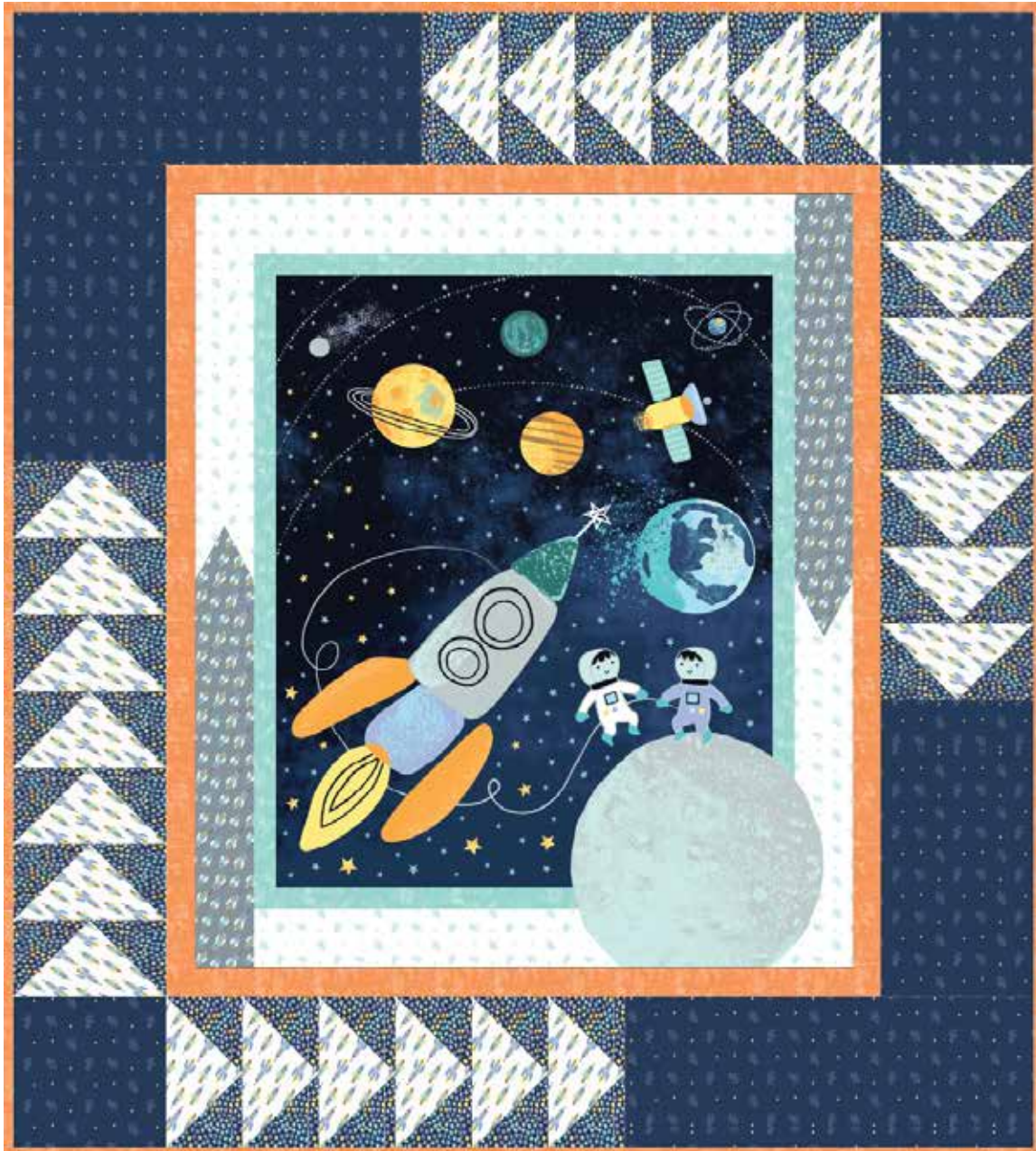


Out of This World

designed by Lisa Swenson Ruble
featuring the Space Explorer collection by Whistler Studios

SIZE: 54" x 60"

FREE
PROJECT



THIS IS A DIGITAL REPRESENTATION OF THE QUILT TOP, FABRIC MAY VARY.

PLEASE NOTE: BEFORE MAKING YOUR PROJECT, CHECK FOR ANY PATTERN UPDATES AT WINDHAMFABRICS.COM'S FREE PROJECTS SECTION.



Out of This World

KEY	FABRIC	SKU	YD	CUTTING INSTRUCTIONS
A		52712P-1	1	Trim panel to measure 35" x 41".
B		52714-2 Cloud Cotton	7/8	(3) 8-1/2" x WOF strips. Subcut (26) 4-1/2" x 8-1/2" rectangles.
C		52715-1 Space Cotton	7/8	(3) 8-1/2" x WOF strips. Subcut (2) 8-1/2" x 22" strips, (2) 8-1/2" x 16" strips and (2) 8-1/2" squares.
D		52716-1 Space Cotton	7/8	(6) 4-1/2" x WOF strips. Subcut (52) 4-1/2" squares.
E		52782-44 Spectrum Canteloupe	7/8	(4) 2" x WOF strips. Subcut (2) 2" x 41" strips and (2) 2" x 38" strips. (6) 2-1/4" x WOF strips for binding.
		Backing	3-1/2	62" x 68" piece of batting

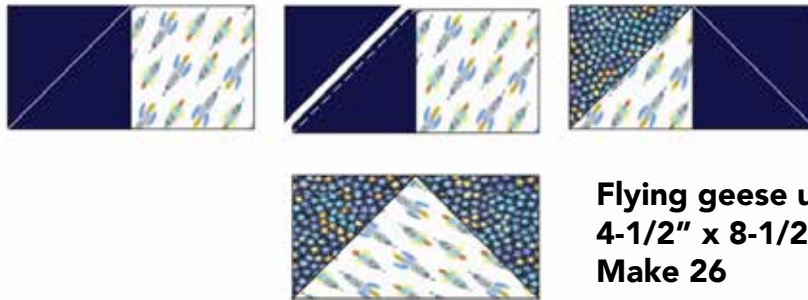
Project Disclaimer: Every effort has been made to ensure that all projects are error free. All the information is presented in good faith, however, no warranty can be given nor results guaranteed. Therefore, we assume no responsibility nor damages that may occur when referring to this pattern. When errors are brought to our attention, we make every effort to correct and post a revision as soon as possible. We suggest you check windhamfabrics.com for pattern updates and to test the pattern prior to making the project. Test templates first, before cutting all the pieces. Free projects are not for resale.



Out of This World

MAKING THE BLOCKS

1. Draw a diagonal line on the wrong side of each **D** 4-1/2" square.
2. Layer a marked square right sides together on one end of (1) **B** 4-1/2" x 8-1/2" rectangle. Stitch on the drawn line, trim seam allowance to 1/4", and press corner open. Repeat with a second marked square on the opposite end of the **B** rectangle to make one flying geese unit. Make a total of (26) flying geese units.



Flying geese units
4-1/2" x 8-1/2" unfinished
Make 26

QUILT ASSEMBLY

3. Sew **E** 2" x 41" strips to opposite sides of the panel. Sew **E** 2" x 38" strips to the top and bottom. Quilt center should measure 38" x 44".
4. Sew together (7) flying geese units into a vertical row. Sew (1) **C** 8-1/2" x 16" strip to the top. Make (2) side borders. Sew to opposite sides of the quilt center.
5. Sew together (6) flying geese units into a horizontal row. Sew (1) **C** 8-1/2" x 22" strip and (1) **C** 8-1/2" square to opposite ends of the flying geese unit section to make a top row. Repeat to make the bottom row. Sew to the top and bottom of the quilt center.



Out of This World



Quilt Assembly Diagram

FINISHING

Layer quilt top, batting and backing together to form the quilt sandwich. Baste and quilt as desired. Bind using **E** 2-1/4" x WOF strips.